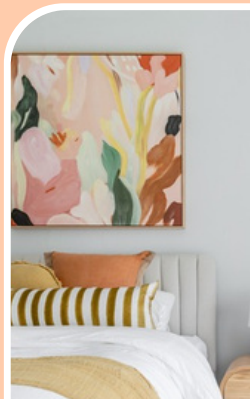


2025 IMPACT REPORT



1,678 SUPPORTED WOMEN
AND CHILDREN IN CRISIS

SIX

NEW SAFE
HAVENS
OPENED



52%

OF OUR
CLIENTS
WERE
CHILDREN



70,277

SAFE BED NIGHTS
PROVIDED

90%

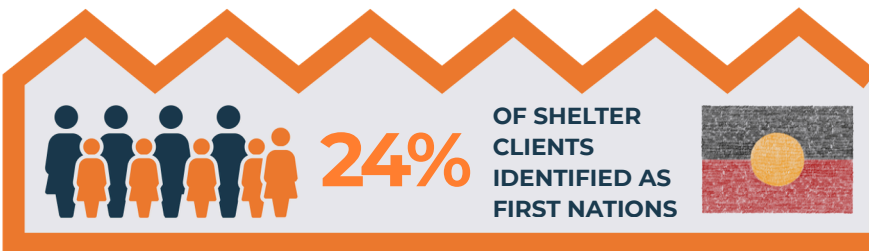


OF SHELTER CLIENTS WE ESCAPING
FAMILY & DOMESTIC VIOLENCE[^]
WITH 28% OF THOSE AT SERIOUS
THREAT OF HOMICIDE*

73%



OF SHELTER CLIENTS
EXITED INTO SAFE AND
SECURE HOUSING



6,333

HIGH SCHOOL STUDENTS
EDUCATED THROUGH OUR
WALK THE TALK PROGRAM

[^]UP FROM 71% IN 2024 | ^{*}UP 63% FROM 2024

Behind each of these numbers there are transformative stories...



The client our case workers supported to finally **move into her very own safe, long-term apartment** who told us she thought that day would never come...

The client who told us that her first night in shelter was the **safest, most secure, understood and supported she felt in almost three years...**



The student who, for the first time, **knows what to say and do** when someone confides in them...

The young boy who can **access learning support and trauma informed counselling** for the first time...



A **16% average improvement in client wellbeing** with our clients reporting higher wellbeing levels than the general population after engaging with our services.

As measured by the Australian Personal Wellbeing Index)



THANK YOU!

Thank you for supporting our work and believing in our mission to help build a world where every woman and child flourishes and lives free from abuse.

We seized an unprecedented number of opportunities to create more safe havens in 2025.



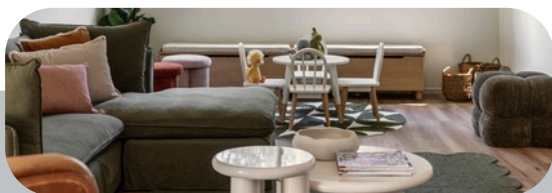
WENTWORTHVILLE

Our first social and affordable property, in Wentworthville NSW, opened for clients in May and is fully occupied.



GLENFIELD HOUSE

We opened Glenfield House, a transitional housing property for 28 older women. To see how this incredible project came to life, please watch the ['A Current Affair' story](#).



ARADA HOUSE

The opening of Arada House in Campsie transforms an existing unit block of 8 self-contained apartments into transitional housing with specialist support services for women and children who have experienced DFV.



TINGIRA HOUSE

We opened Tingira House our new safe haven for 20 women aged 55+ in Mount Hutton, NSW (Lake Macquarie).



LIVERPOOL

We opened our new Liverpool Women's Shelter and by the end of the year we had supported 20 women and children in shelter and through outreach.



AURORA PLACE

We opened the doors to the largest 'meanwhile use*' housing initiative in the Southern Hemisphere, in Sydney's Inner West, which can support up to 50 people at one time, including families.



BIYANI HOUSE

We increased capacity on site at Biyani House, Revesby. In just 16 weeks, we craned in new dwellings to help more women and children rebuild their lives in safety. We invite you to watch the August 2025 [Channel 7 story](#) and the partnership video [here](#).

MAY

MAY

SEPT

SEPT

OCT

NOV

NOV

OUR IMPACT ON YOUNG PEOPLE



6,333 STUDENTS PARTICIPATED IN 2025



"It gave us the skills and the confidence and the opportunities to speak out and lead with empathy."

Student

[READ OUR 2025 IMPACT REPORT](#)

100%



of students would recommend the program to others.

97%

Students **rated the program very good/excellent.**



11 Shelters

and safe havens supported.



\$290,000+

Students generated significant **value in their local communities** through volunteer hours, goods and donations.



THE YEAR AHEAD

2026 is a year of consolidation, making sure our social franchise model is sound, and our people have the systems and support they need to thrive.

We are also excited to announce:

- Work has started on **our newest shelter in the Southern Highlands**, NSW with building work due to begin in May.
- Our **first interstate shelter in Mornington Peninsula**, Victoria will open the doors in 2026.

We look forward to providing more exciting updates and to making a difference in more women's and children's lives.



Blue Wren House, Camden



**COMMUNITY IS AT
THE CENTRE OF OUR
NAME AND THE
HEART OF
EVERTHING WE DO.
THANK YOU FOR
BEING PART OF THE
WOMEN'S
COMMUNITY
SHELTERS FAMILY
IN 2025.**